



# ecoshelta®

[www.ecoshelta.com](http://www.ecoshelta.com)

ACN 096 302 028

[enquiries@ecoshelta.com](mailto:enquiries@ecoshelta.com)

142 Australia Street , Newtown, NSW, 2042 Australia

Mobile 0434 443 792

T + 61 2 8117 8174

F + 61 2 9557 9598

## **EcoShelta Cabins Layout Options and Costings**

Current Pricing details for EcoShelta modules valid to 30<sup>th</sup> Dec 2010

**The EcoShelta System has many advantages over tradition construction techniques, including:**

- **Award Winning, Contemporary, Sustainable, Architect Designed, Modular Building.**
- **Minimal site disturbance without need for heavy machinery or on site works.**
- **Minimal site construction period with rapid on site assembly, less than a day per pod.**
- **Safe construction site.**
- **Excellent Cost Control with prefabricated building.**
- **Low Maintenance, termite and fire resistant construction.**
- **Easily Relocatable, each pod demounts in under three hours.**
- **Easily Extendable, Repairable and Replaceable at any time.**



# ecoshelta®

---

## **The Three bigpod Single Pavilion EcoShelta Cabin**

Current GST Inclusive Pricing details for EcoShelta big.pod modules valid to 30<sup>th</sup> December 2010

**A Basic Unit** Three bigpod cabin is costed at \$73,125, inc GST. The illustrated three pod pavilion comes complete with glazed doors on three sides of the living and dining and glazed windows for the kitchen and the ensuite, timber floor panels, select grade ply ceilings, plaster wall linings, glazed highlights, half round matching guttering and timber decking. The fully fitted bigpod cabin cost ex shop is approximately \$118,195 including GST. We can add a bathroom for \$8400 and a kitchen as illustrated with appliances for \$16,400.

The building will need a footings system, sewerage connection, water supply and power supply to the building. A licensed electrician would be required to fit out the pods with lights and power points as required. EcoShelta can supply pre-fitted outlets and light fittings at negotiated rates to your specifications.

EcoShelta can supply an Environmentally Responsible Fitout package consisting of:

- a PhotoVoltaic array system with 240V AC converter and Grid feedback controls;
- an integrated low wattage compact fluorescent lighting system;
- a solar hot water system using state of the art evacuated tube technology;
- a rainwater harvesting and re-use system feeding a WC and Laundry;
- a 5 Star integrated WC/handbasin system;
- a sullage recycling system (to be used in conjunction with a garden bed).

EcoShelta can arrange for all site works if required and we can also provide a site analysis service to determine the optimum location and orientation for the pavilion. Site assembly would take from 7 to 10 working days.

With the kitchen and bathroom and EcoPackage and adding on transport, footings preparation and site assembly, the cost of this three bigpod building would be \$210,077.50 (plus site service connection costs)

This building may require approval from your local council and we can supply a full set of BCA approved plans and engineering certifications.

---



# ecoshelta®

---

## **The Two bigpod Single Pavilion EcoShelta Cabin**

Current GST Inclusive Pricing details for EcoShelta big.pod modules valid to 30<sup>th</sup> December 2010

**A Basic Unit Two bigpod cabin is costed at \$51,185, inc GST. The illustrated three pod pavilion comes complete with glazed doors on three sides of the living and dining and glazed windows for the kitchen and the ensuite, timber floor panels, select grade ply ceilings, plaster wall linings, glazed highlights, half round matching guttering and timber decking. The fully fitted bigpod cabin cost ex shop is approximately \$83,950 including GST. We can add a bathroom for \$8400 and a kitchen as illustrated with appliances for \$16,400.**

**The building will need a footings system, sewerage connection, water supply and power supply to the building. A licensed electrician would be required to fit out the pods with lights and power points as required. EcoShelta can supply pre-fitted outlets and light fittings at negotiated rates to your specifications.**

**EcoShelta can supply an Environmentally Responsible Fitout package consisting of:**

- **a PhotoVoltaic array system with 240V AC converter and Grid feedback controls;**
- **an integrated low wattage compact fluorescent lighting system;**
- **a solar hot water system using state of the art evacuated tube technology;**
- **a rainwater harvesting and re-use system feeding a WC and Laundry;**
- **a 5 Star integrated WC/handbasin system;**
- **a sullage recycling system (to be used in conjunction with a garden bed).**

**EcoShelta can arrange for all site works if required and we can also provide a site analysis service to determine the optimum location and orientation for the pavilion. Site assembly would take from 5 to 7 working days.**

**With the kitchen and bathroom and EcoPackage and adding on transport, footings preparation and site assembly, the cost of this three bigpod building would be \$171,400 (plus site service connection costs).**

**This building may require approval from your local council and we can supply a full set of BCA approved plans and engineering certifications.**

---



# ecoshelta®

---

## **The Single Basic Bigpod EcoShelta Pavilion**

Current GST Inclusive Pricing details for EcoShelta big.pod modules valid to 30<sup>th</sup> December 2010

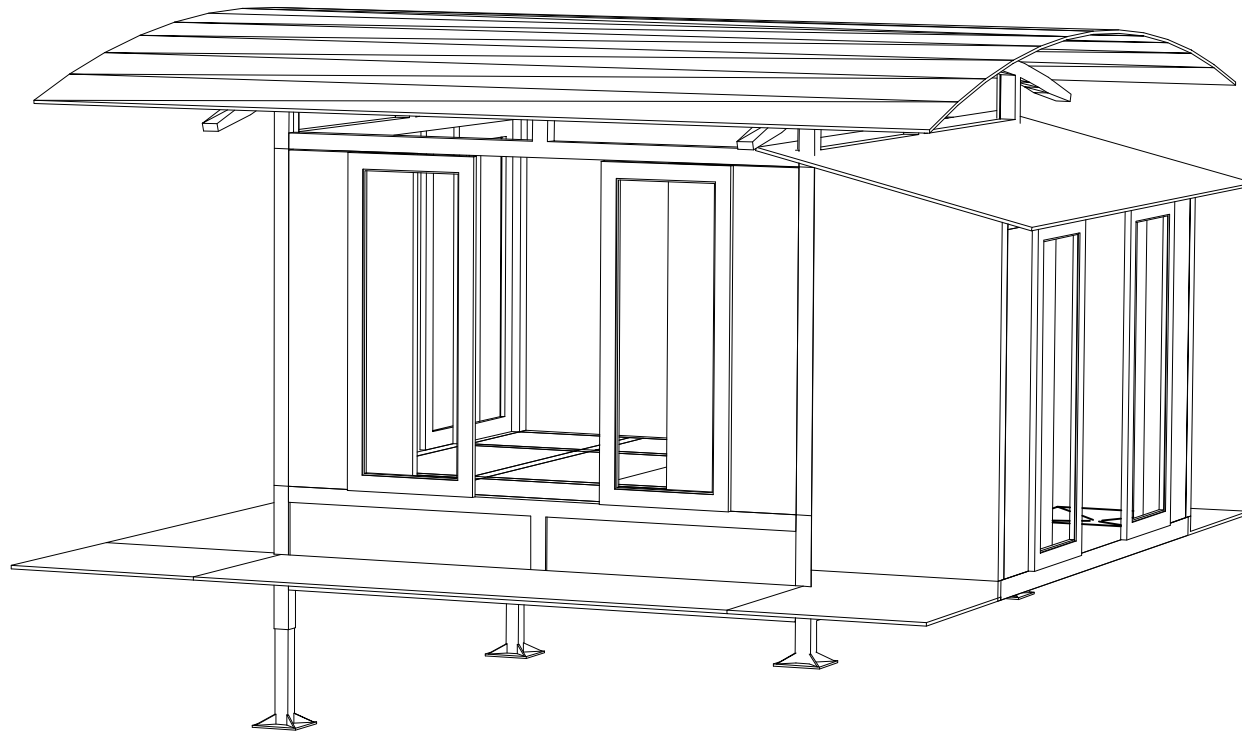
**A Basic Unit bigpod pavilion is costed at \$29,250, inc GST. The illustrated single pod pavilion comes complete with glazed doors on two sides, ply ceilings, glazed highlights, half round matching guttering and timber decking. The bigpod pavilion cost ex shop, adding a partial Eco Package with rainwater tank and PV system to light the pavilion, is approximately \$55,160 including GST.**

**The building will need a footings system for the building.**

**EcoShelta can arrange for all site works if required and we can also provide a site analysis service to determine the optimum location and orientation for the pavilion. Site assembly would take from 1 to 2 working days. Adding footing system, delivery to the rooftop site and assembly gives a cost of \$66,390.**

**This building may require approval from your local council and we can supply a full set of BCA approved plans and engineering certifications.**

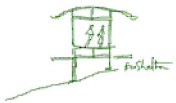
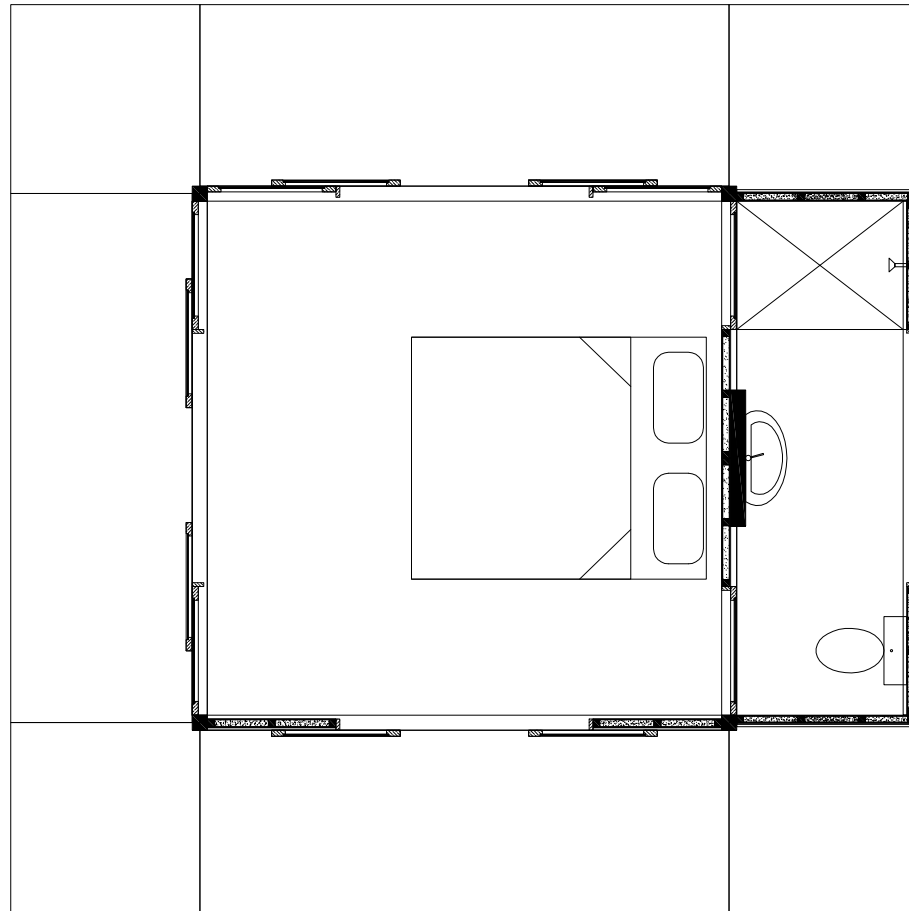
---



ecoshelta®

## ECOSHELTA WITH ENSUITE

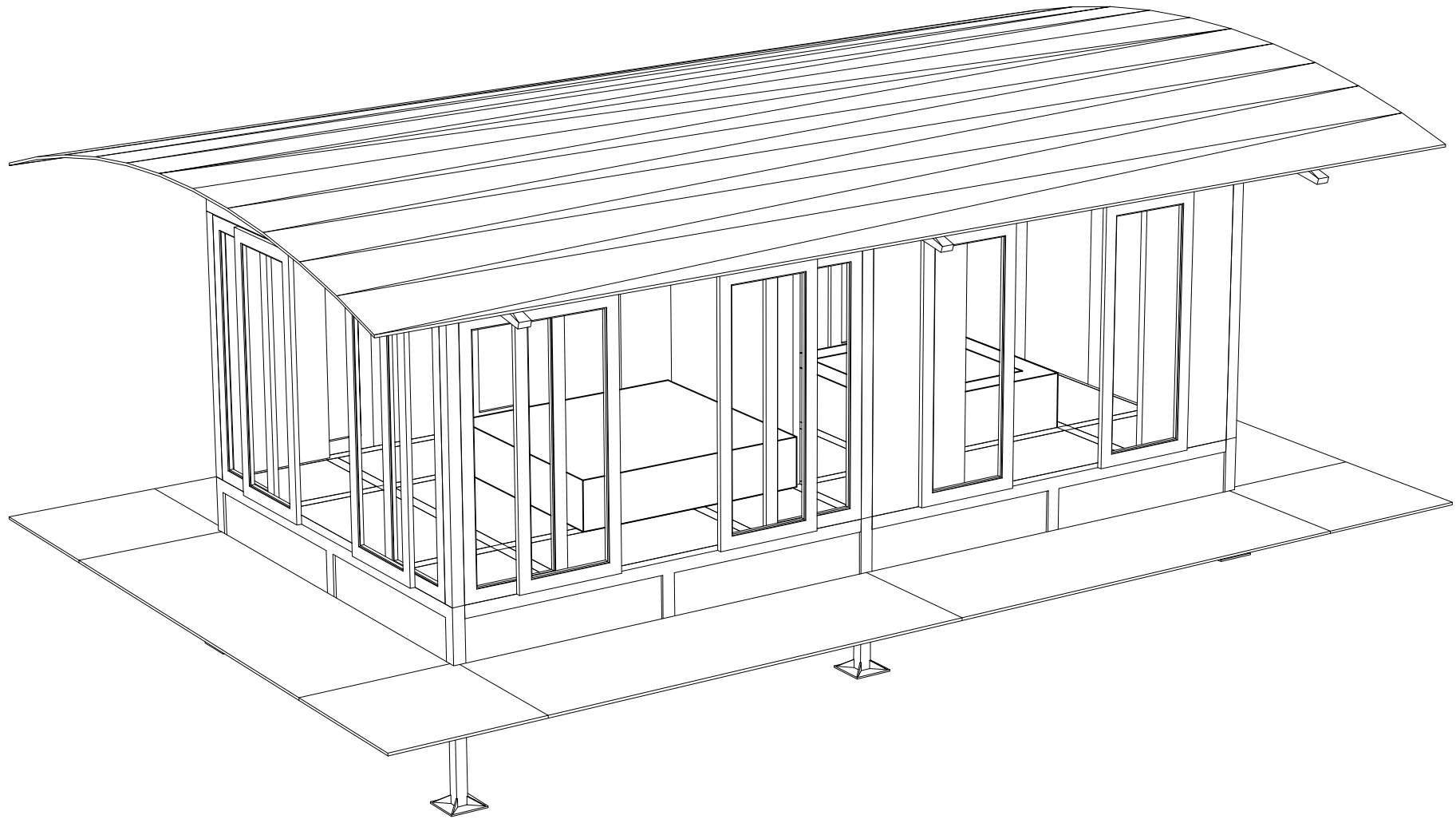
ASPECT  
Not to Scale  
Drw No 0702020



**ecoshelta**<sup>®</sup>

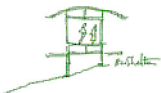
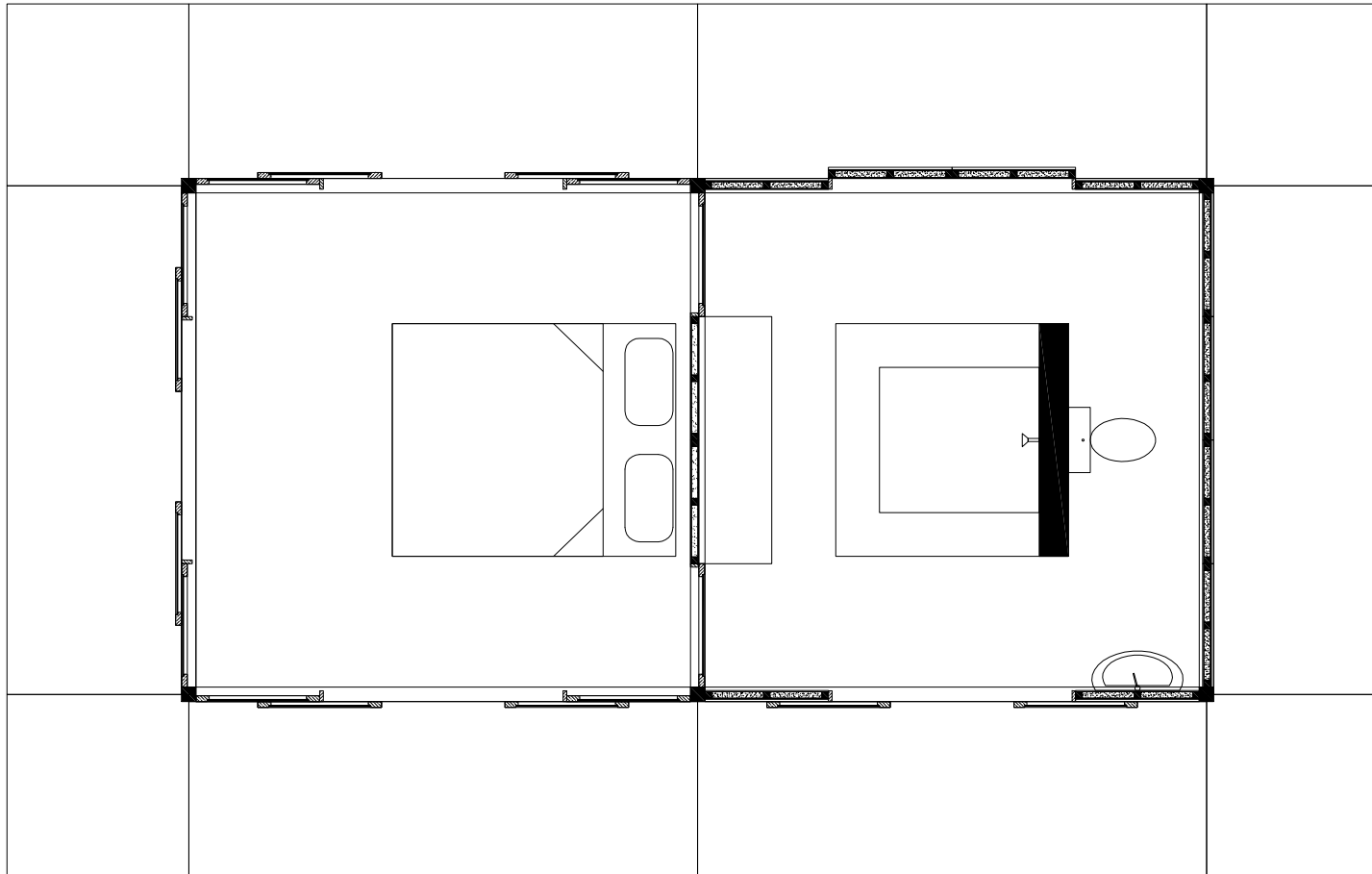
# Single Pod with en-suite

**PLAN**  
**Scale 1:50**  
**Drw No 0705115**



**ecoshelta**® **Two Pod Single Pavilion**

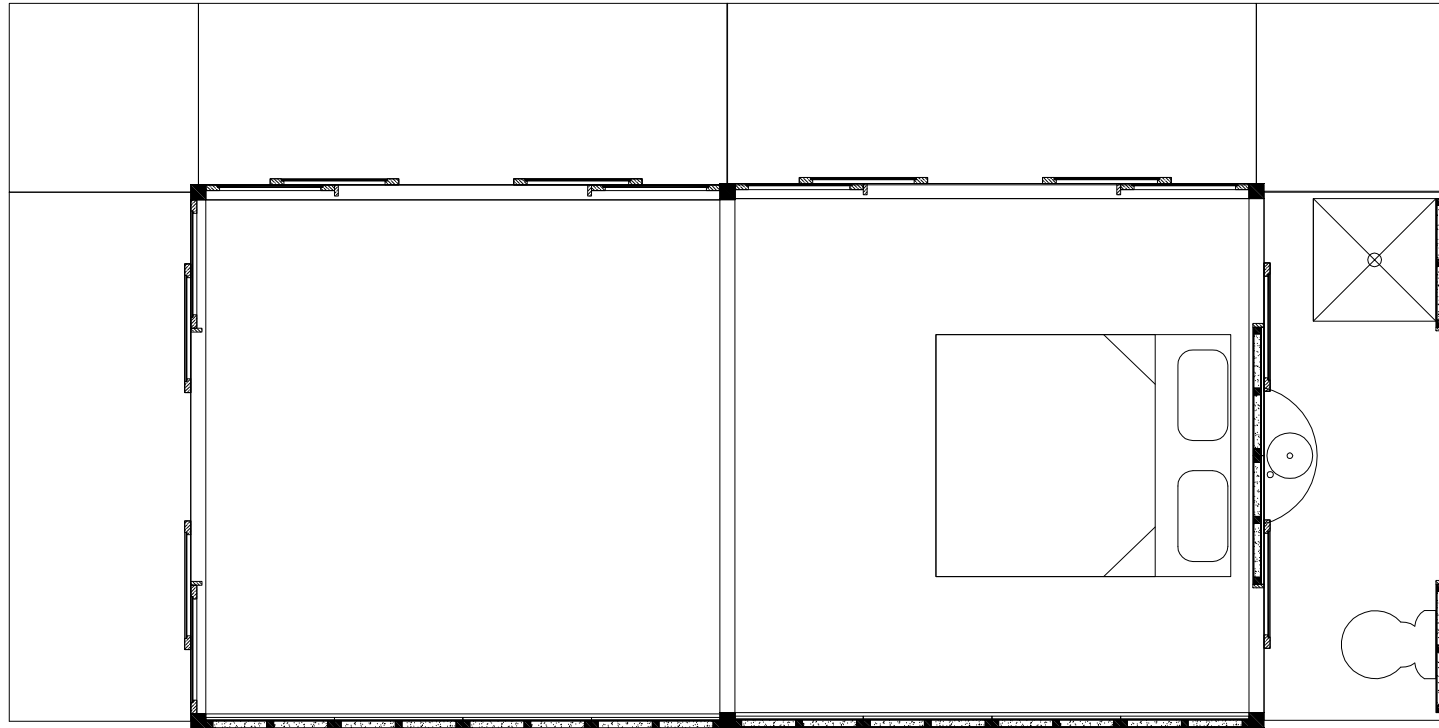
**ASPECT**  
**Not To Scale**  
**Drw No 0507015**



ecoshelta®

# Two Pod Single Pavilion

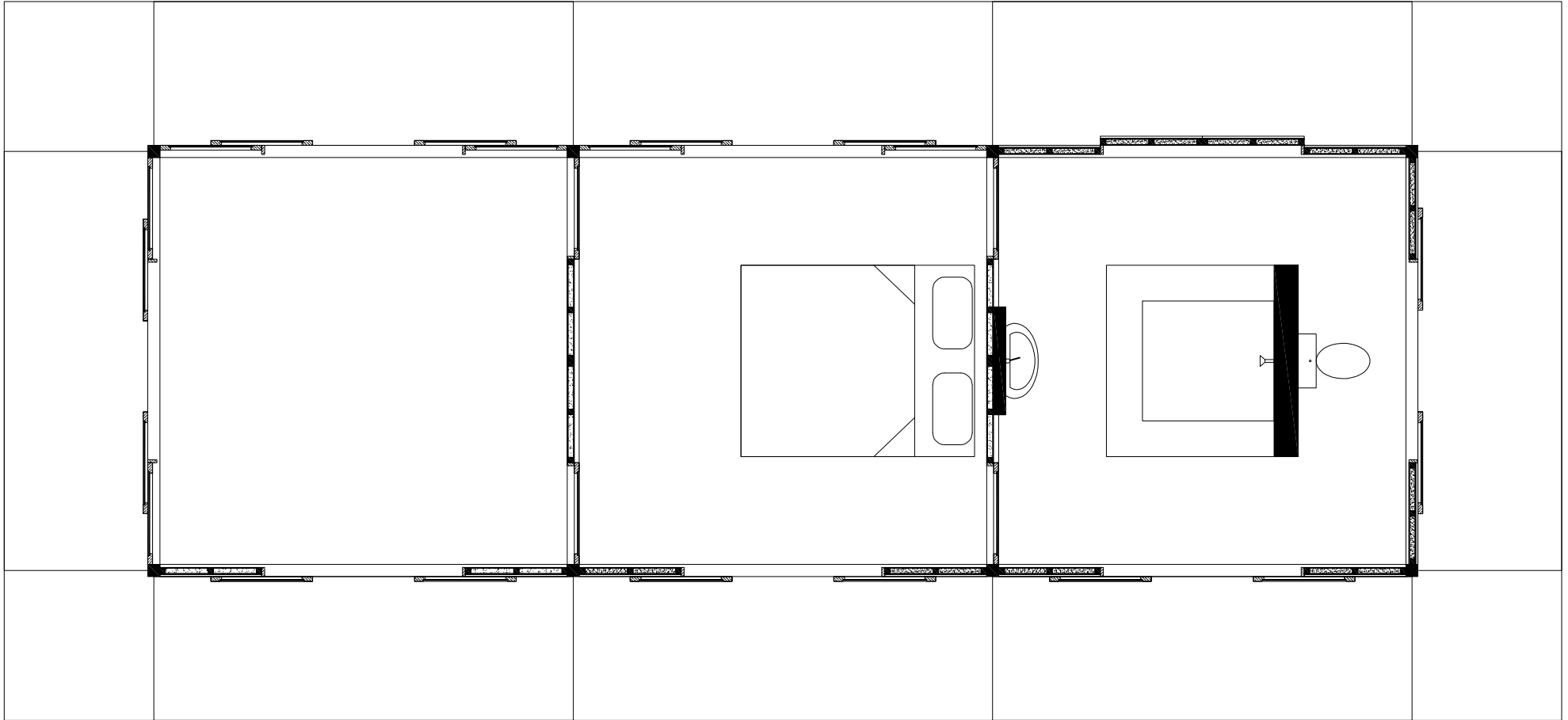
PLAN  
Scale 1:50  
Drw No 0703121



**ecoshelta**<sup>®</sup>

**Two Pod EcoShelta Studio  
with ensuite**

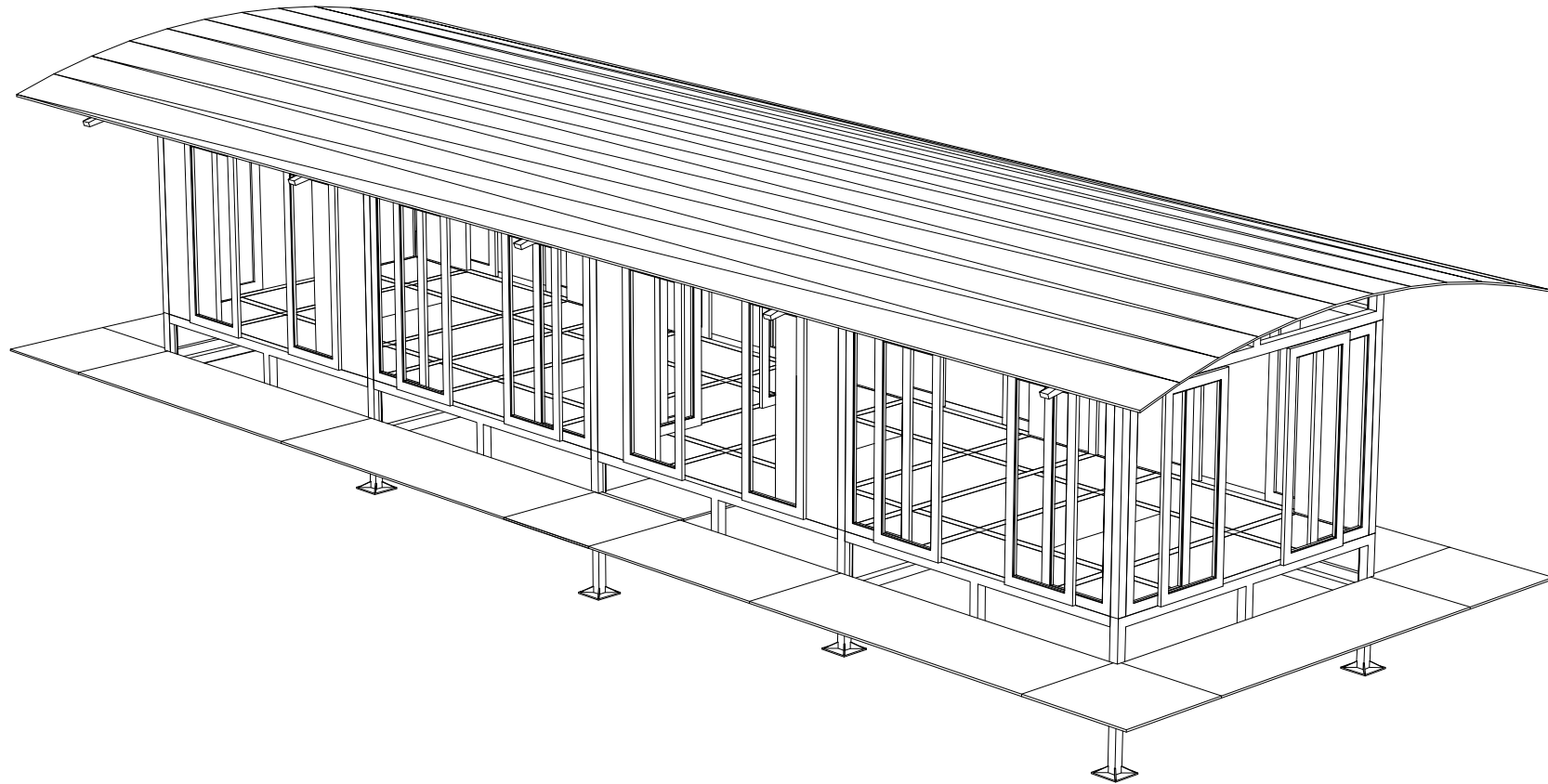
**PLAN  
Scale 1:50  
Drw No 0704170**



ecoshelta®

# Three Pavilions

PLAN  
Scale 1:50  
Drw No 0705131



# Four Pod Single Pavilion One Bedroom Home

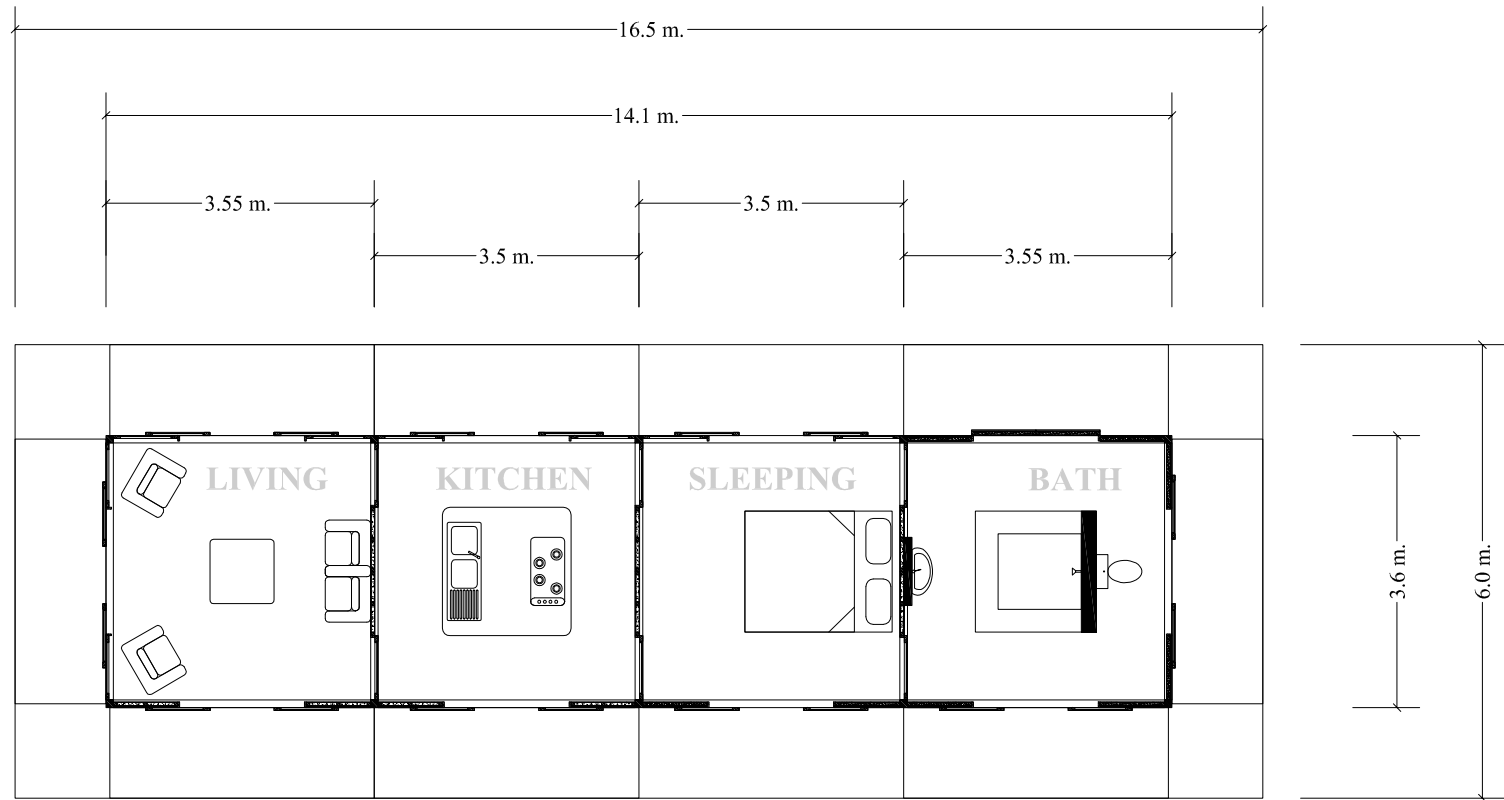
West Aspect  
Not to Scale  
Drw No 0705015

**Four Ecoshelta  
Pod single  
pavilion layout**

**Sitting space,  
kichen, sleeping  
space and bath  
house.**

**Approx 50 SqM of  
floor space**

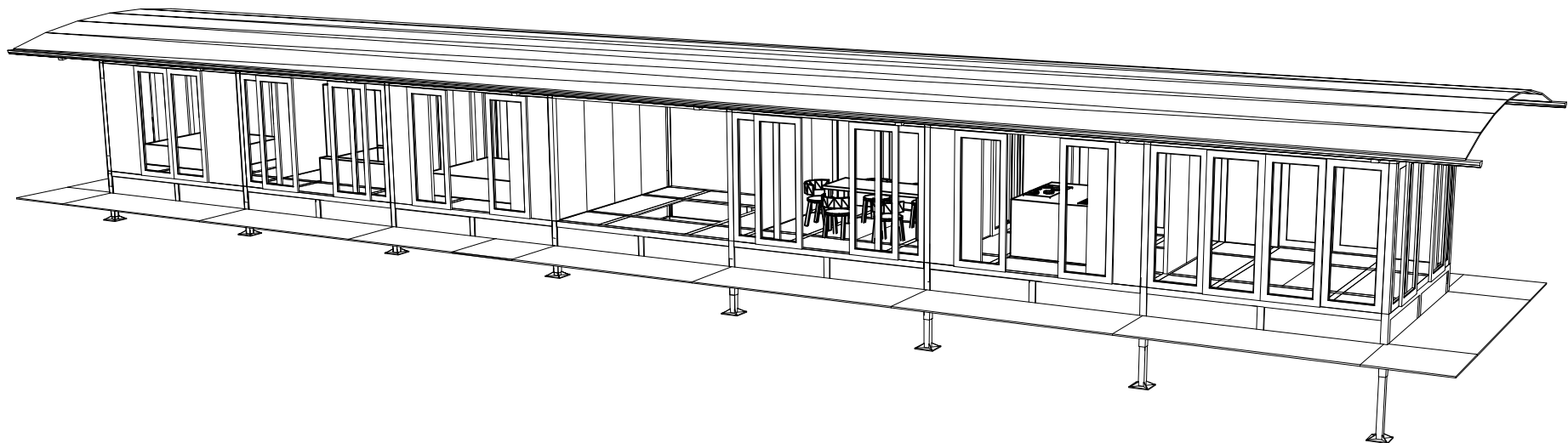
**1200mm wide  
decking around  
entire pavilion.**



**ecoshelta®**

**Four Pod Single Pavilion  
One Bedroom Home**

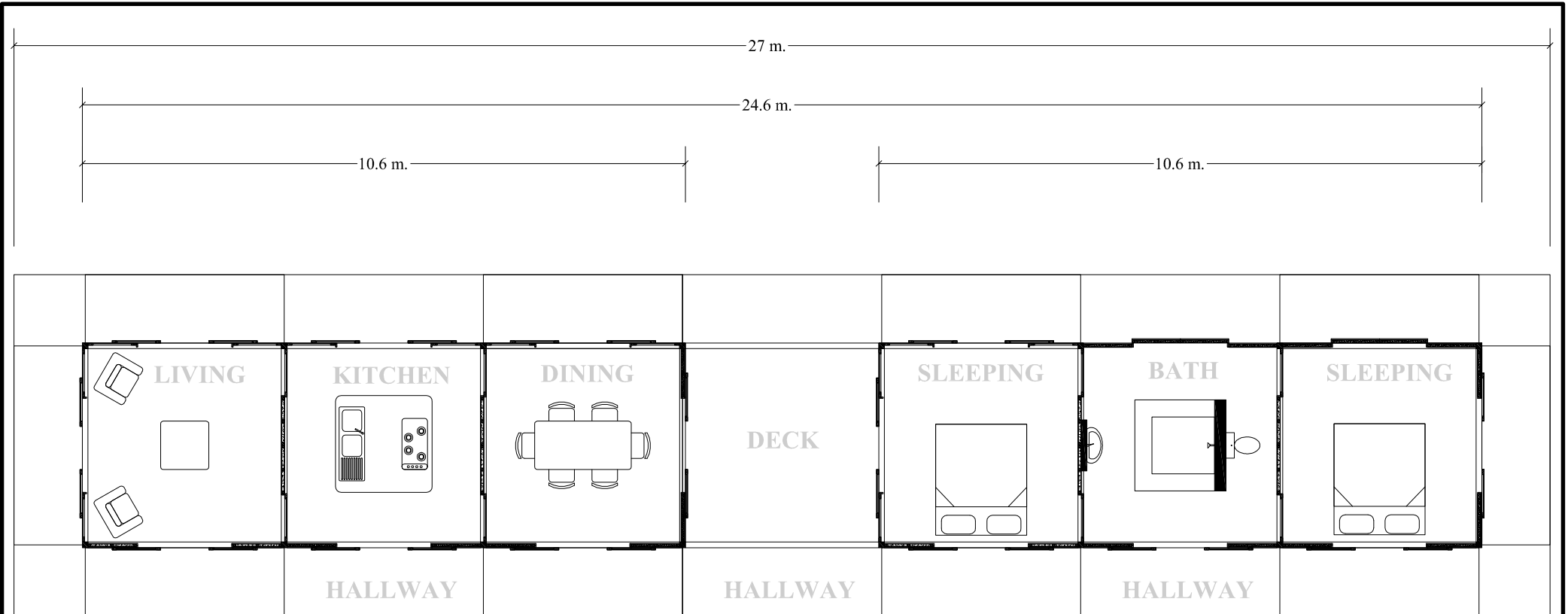
**PLAN  
Scale 1:100  
Drw No 0507110**



ecosshelta®

**Six Pod Single Pavilion  
Two Bedroom Home**

Aspect  
Not to Scale  
Drw No 0507015



**NOTES:**

Six Ecoshelta Pods in a single linear pavilion layout with a open deck space in the centre

Living space, kichen, dining, deck, two sleeping spaces and a bath house.

Approx 76 SqM of floor space plus 12 SqM centre deck and 1200mm wide decking around entire pavilion.

Glazed doors to all areas with solid doors between rooms and for the Bath House.

Kitchen and Bath House Fitout Kits available.



**ecoshelta**

**Six Pod Single Pavilion  
Two Bedroom Home**

**PLAN  
Scale 1:100  
Drw No 0705161**