

**NOTES**

Two x three EcoShelta bigpod and single side extension pavilions with glass and masonry walled entry vestibule joiner unit.

Exposed large section, factory welded structural aluminium alloy frame with on site bolt together assembly.

Site constructed Masonry Walls for lower base walls and bath element.

Roofing and Wall Panel cladding in corrugated zincalume. Twin skin roof with ceiling ventilation panels

Prefabricated Timber Decking panels on north side of dwelling with central decked terrace between pavilions. Insulated Timber faced flooring panels on alloy joists.

This unit will require 38 concrete pad footings for the extendable prefabricated alloy feet.

Electricity supply from street mains. gas boosted Solar Hot Water system with roof mounted panels and ground mounted tank.

Water supply from a 22,000 litre poly tank.

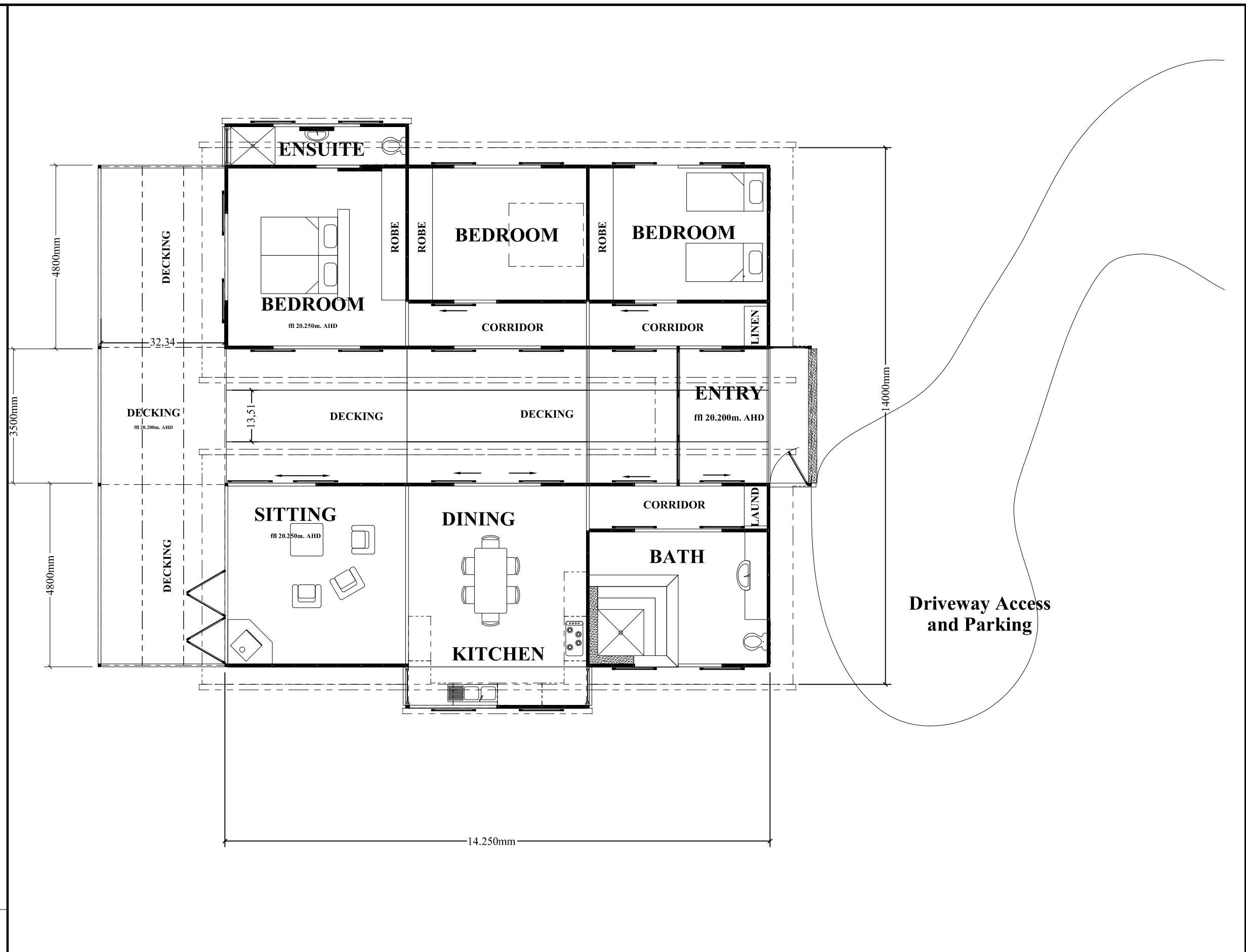
Greywater diversion device to underground soakage irrigation system with overflow to Sewerage Disposal

On Site Sewerage disposal system through dual Purpose septic tank and on site drainage soakage trench as per drainage plan details

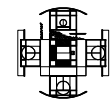
Alloy Mechanism screened clear glass louvered windows for kitchen side extension

Alloy Mechanism screened white glass louvered windows for ensuite side extension

Glazed highlights to the pavilion ends in alloy framing.



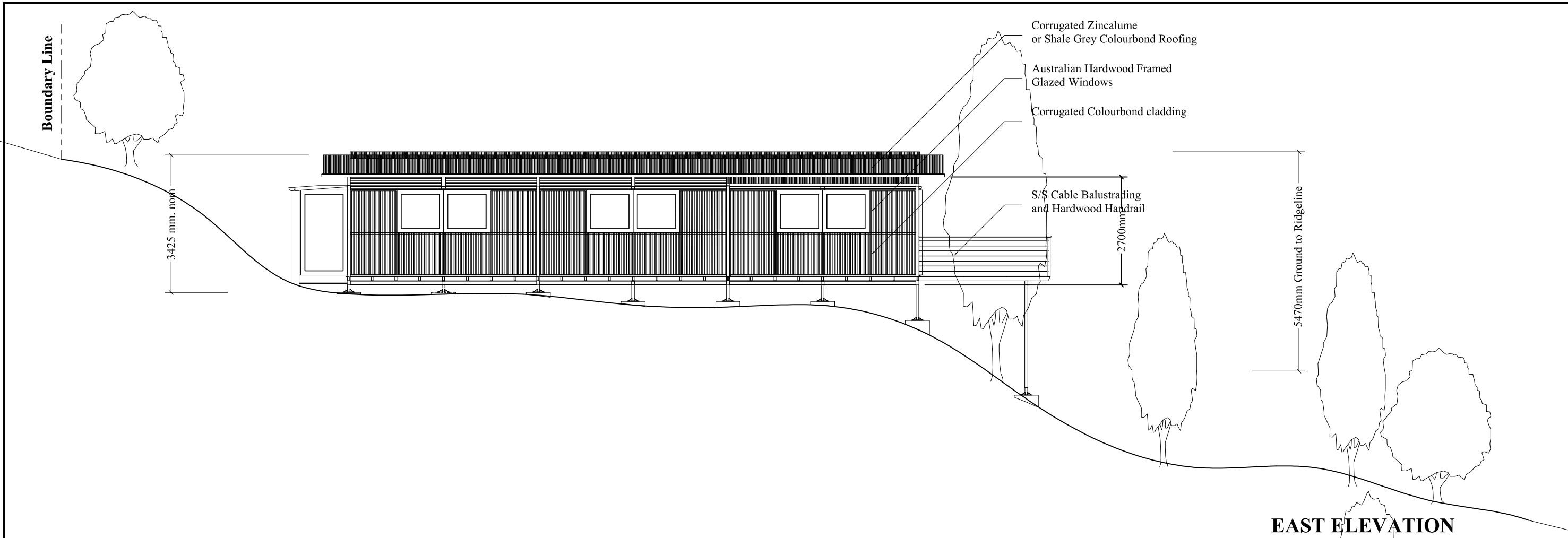
Designed & Drawn by  
 Stephen Sainsbury architect  
 ph +61 (0) 434 443 792  
 stephen.sainsbury@ecoshelta.com  
 www.ssarch.ecoshelta.com



DESIGNED	-	SS
ENGINEERING	-	NJ
DRAWN	-	ML
REVIEWED	-	17/9/10

**6 BIGPOD TWO PAVILION HOUSE**

**PLAN**  
 Scale 1:100  
 Drw No 10122102



**NOTES**

Corrugated Zincalume twin skinned vaulted roof, screw fixed to aluminium alloy purlins. Half round zincalume guttering and 75mm zincalume downpipes.

Glazed 6.38mm Laminated end highlights to North

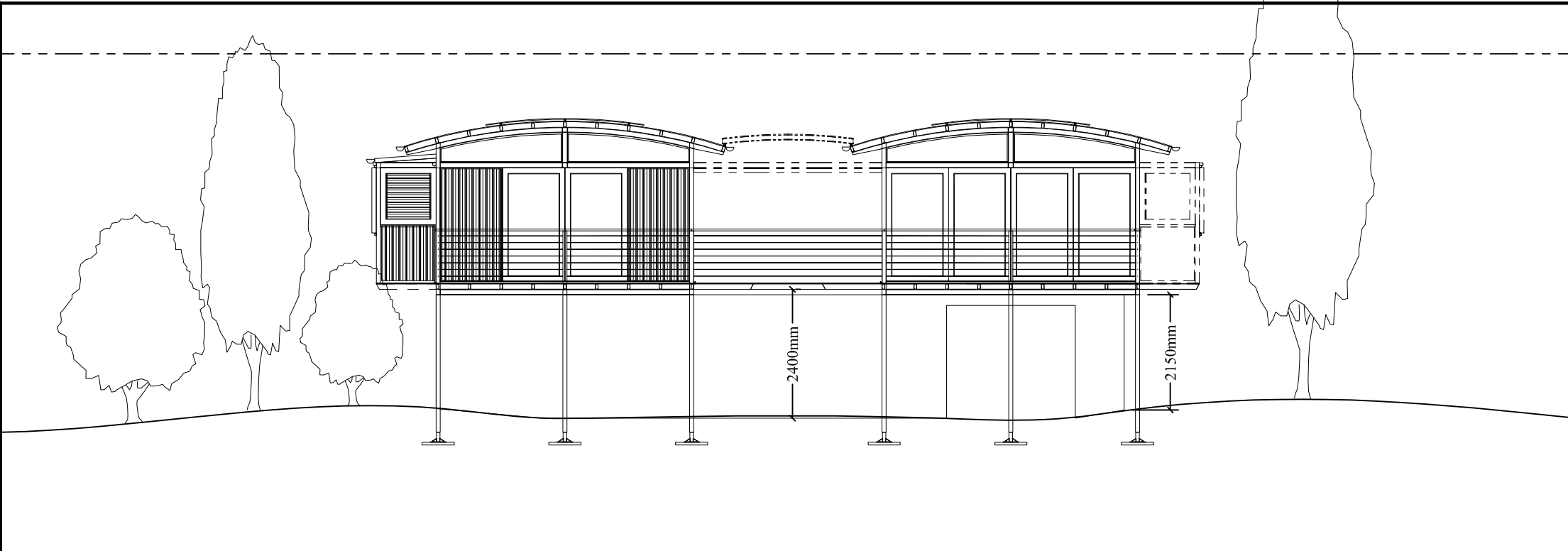
Corrugated Zincalume clad modular wall and highlight brace panels.

Timber framed glazed doors and windows, sliding on Centor E2 interchangeable top hung rail system on timber sills. Bifolding glazed timber doors to living.

3.3m wide timber decking on alloy cantelevered joists to north, with S/S cable balustrading, timber handrail

Mill Finish Alloy Frame visible throughout the building going down to ground level concrete pier footings or top of rendered masonry wall on lower terrace level.

Rendered AAC lower masonry support walls.



Designed & Drawn by  
 Stephen Sainsbury architect  
 ph +61 (0) 434 443 792  
 stephen.sainsbury@ecosshelta.com  
 www.ssarch.ecosshelta.com

DESIGNED - SS  
 ENGINEERING -  
 DRAWN - SS  
 REVIEWED -

# 6 BIGPOD TWO PAVILION DWELLING

**ELEVATIONS**  
 Scale 1:100  
 Drw No 10122201